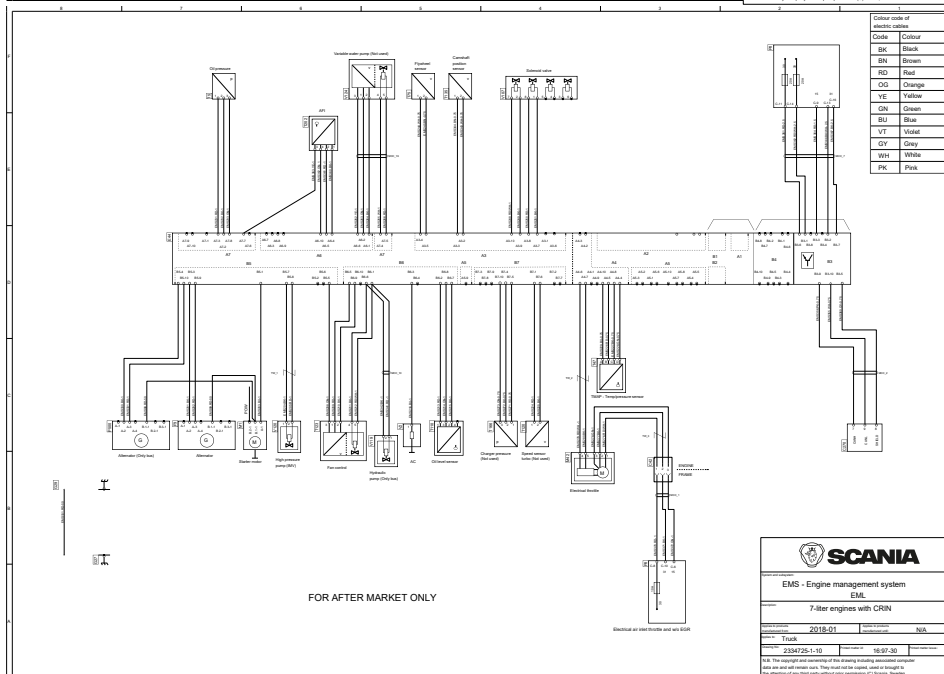
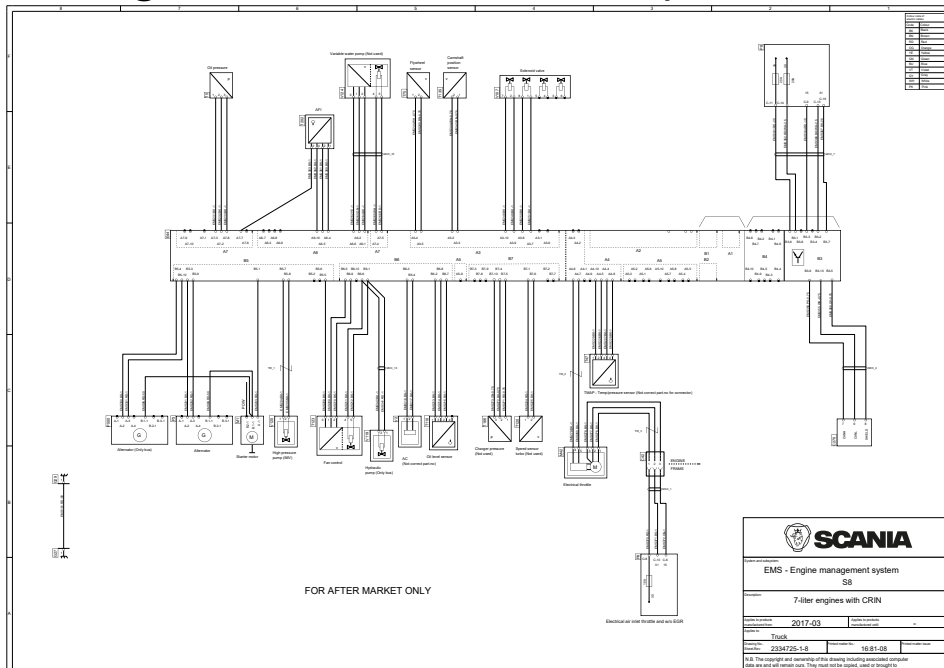
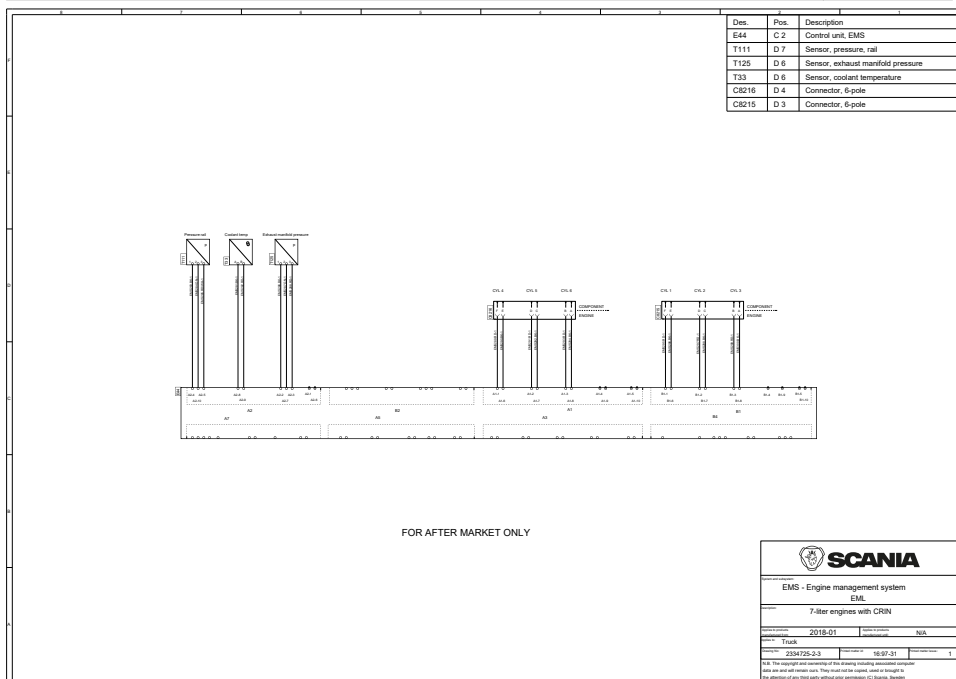
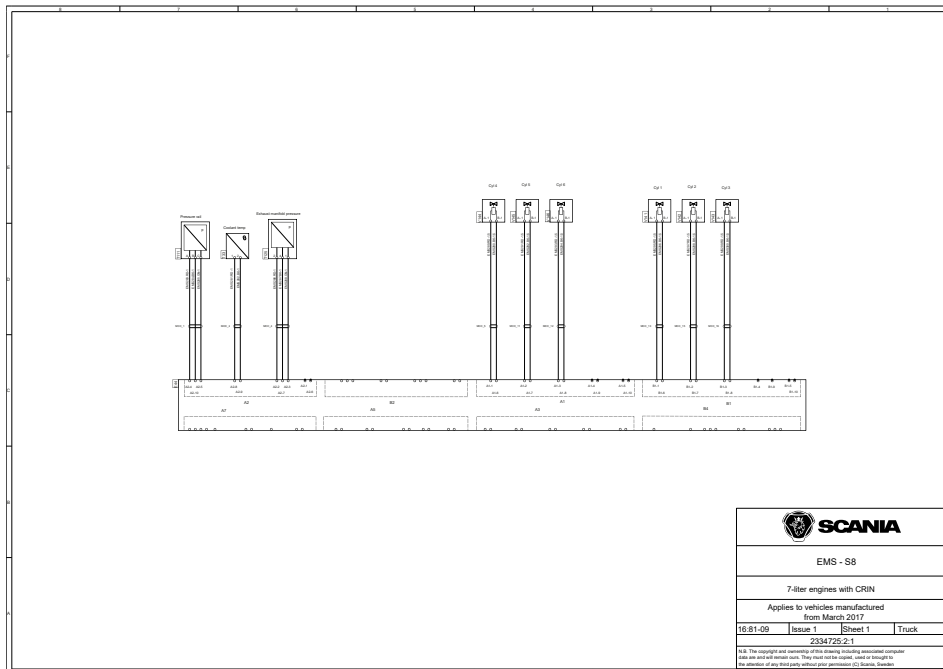


# EMS, Sistema de controle do motor S8, para caminhões

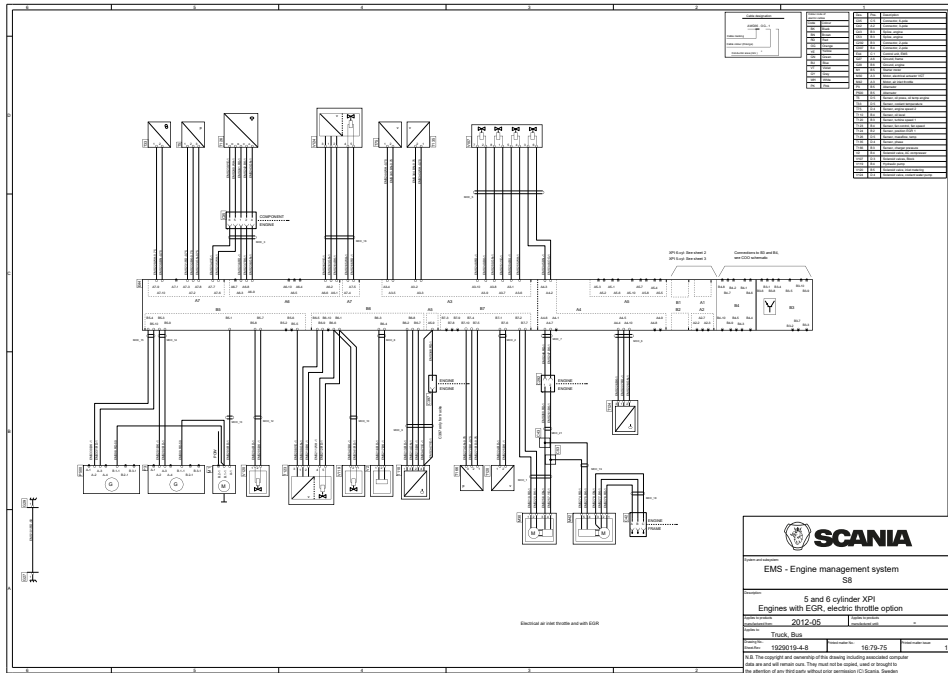
## Visão geral - Motores de 7 litros





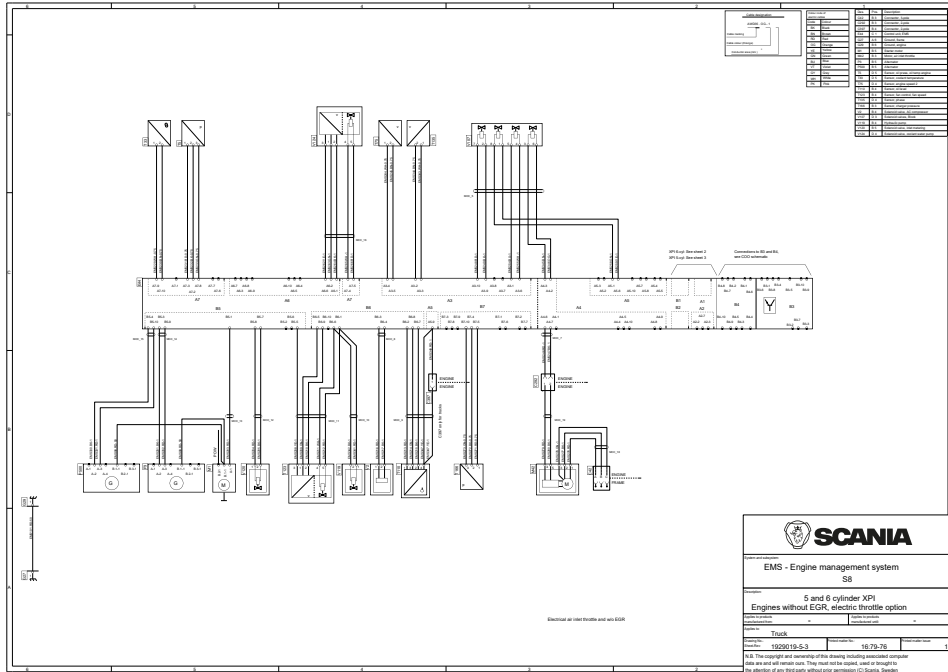
# Visão geral - Motores de 9 e 13 litros com XPI e EGR

Veículos fabricados a partir de e inclusive maio de 2012  
Com acelerador elétrico ou sem borboleta.

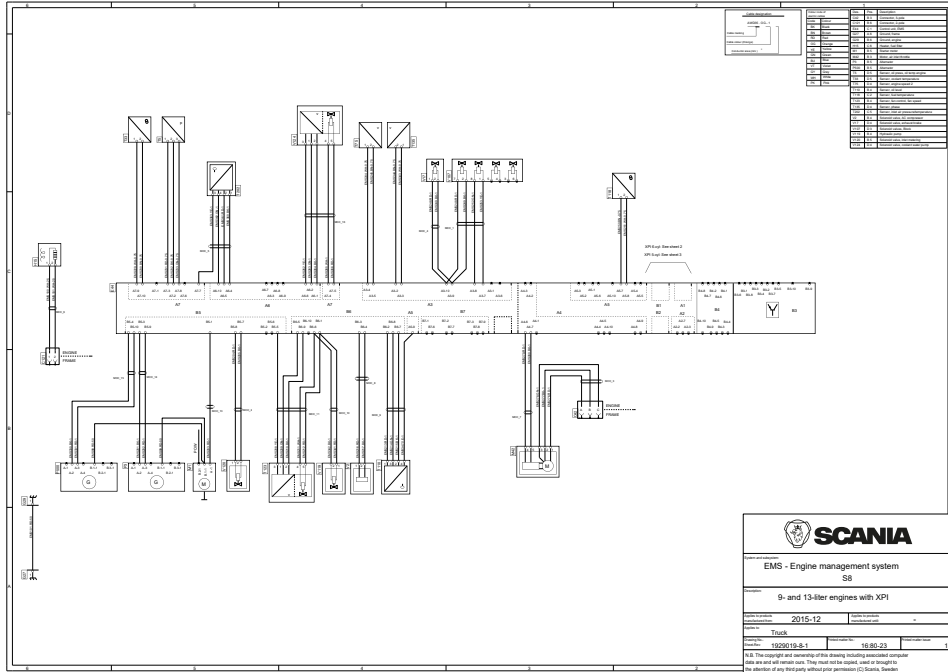


# Visão geral - Motores de 9 e 13 litros com XPI sem EGR

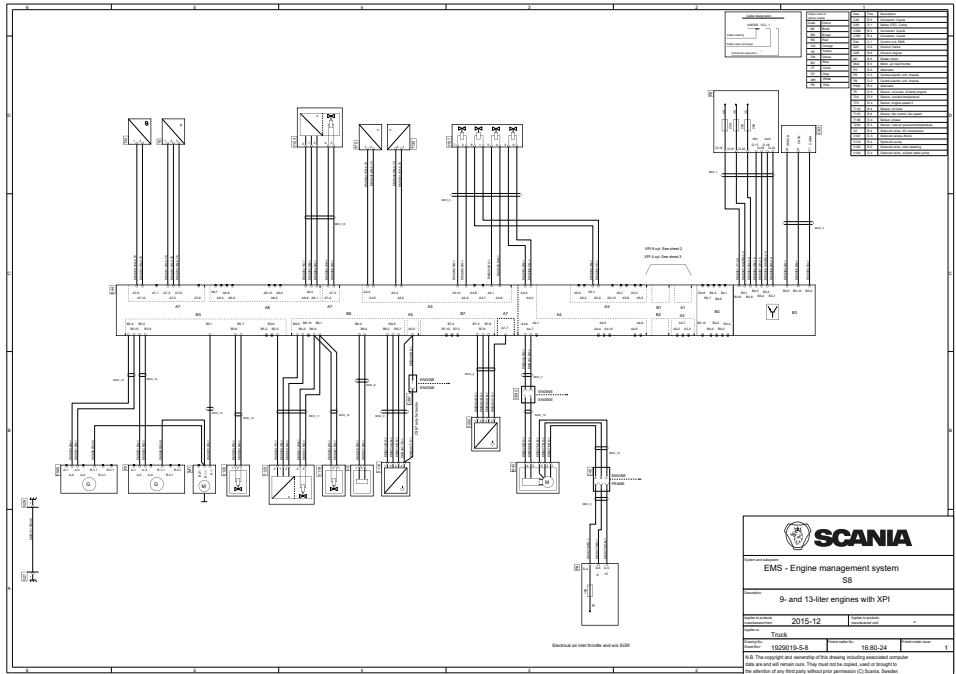
## Veículos com borboleta elétrica ou sem borboleta



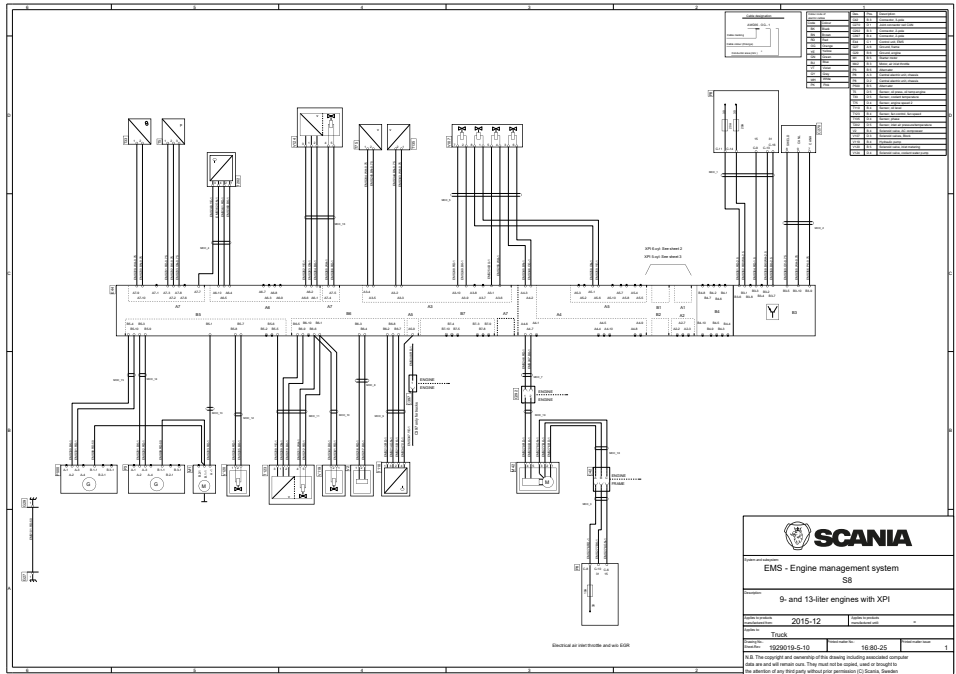
# Visão geral - Motores de 9 e 13 litros com XPI sem EGR



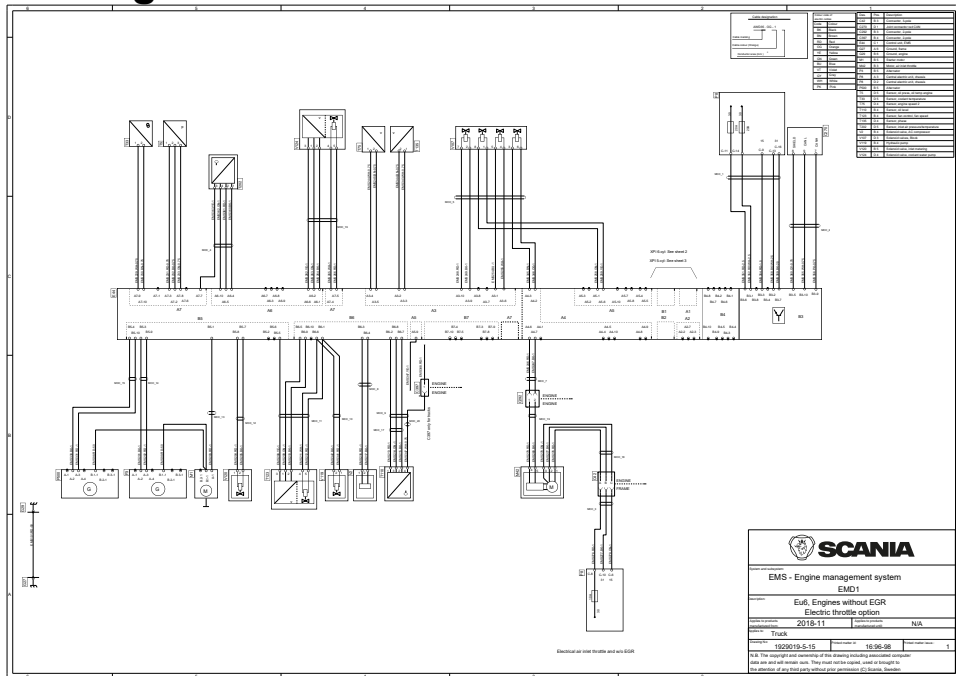
# Visão geral - Motores de 9 e 13 litros com XPI sem EGR



# Visão geral - Motores de 9 e 13 litros com XPI sem EGR

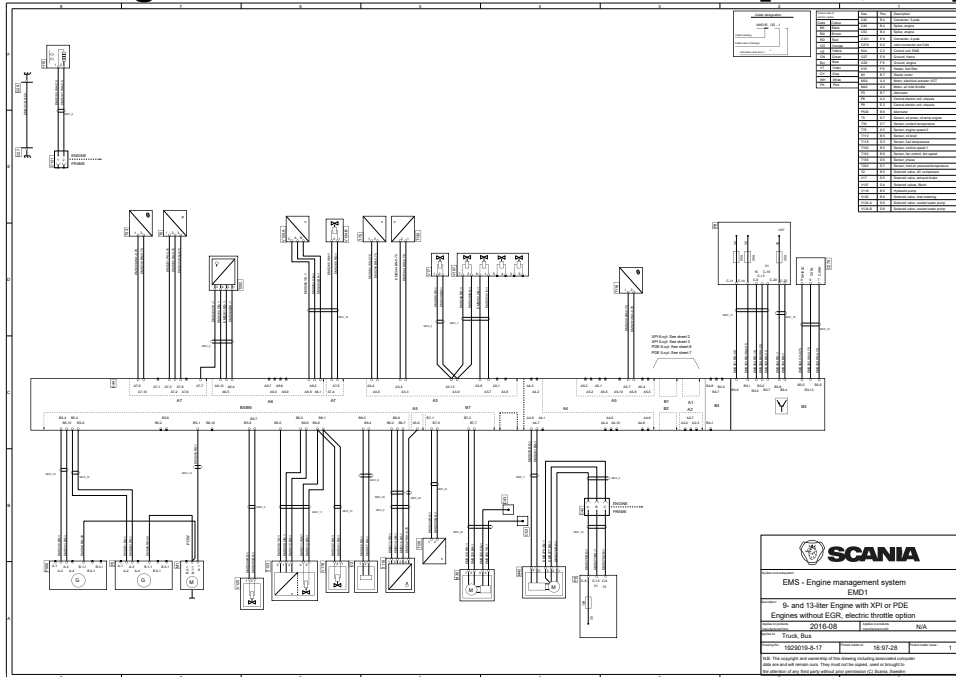


# Visão geral - Motores de 9 e 13 litros com XPI sem EGR





# Visão geral - Motores de 9 e 13 litros [PDE, XPI]

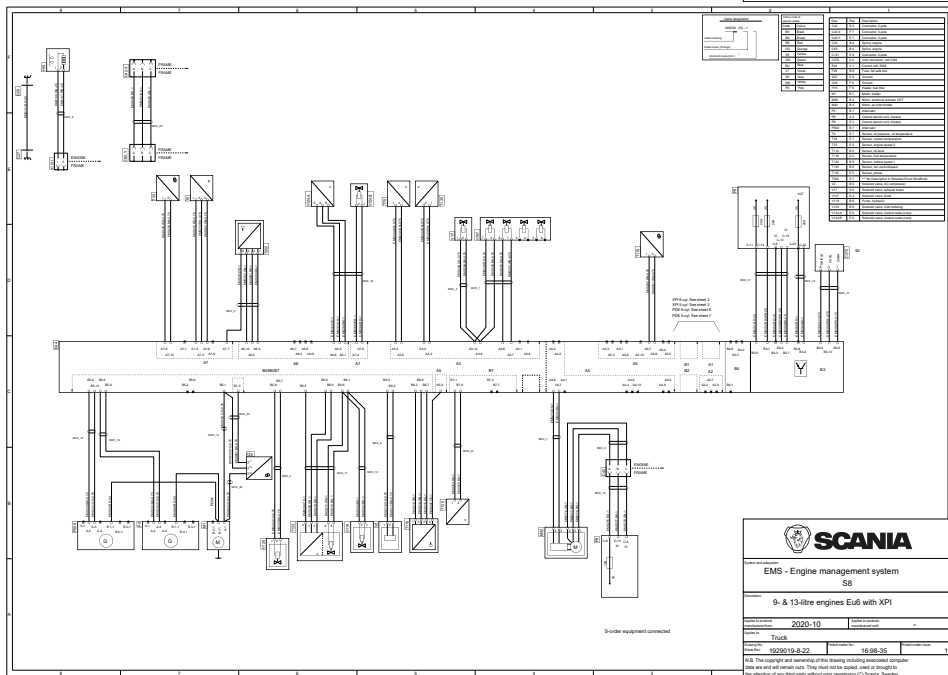
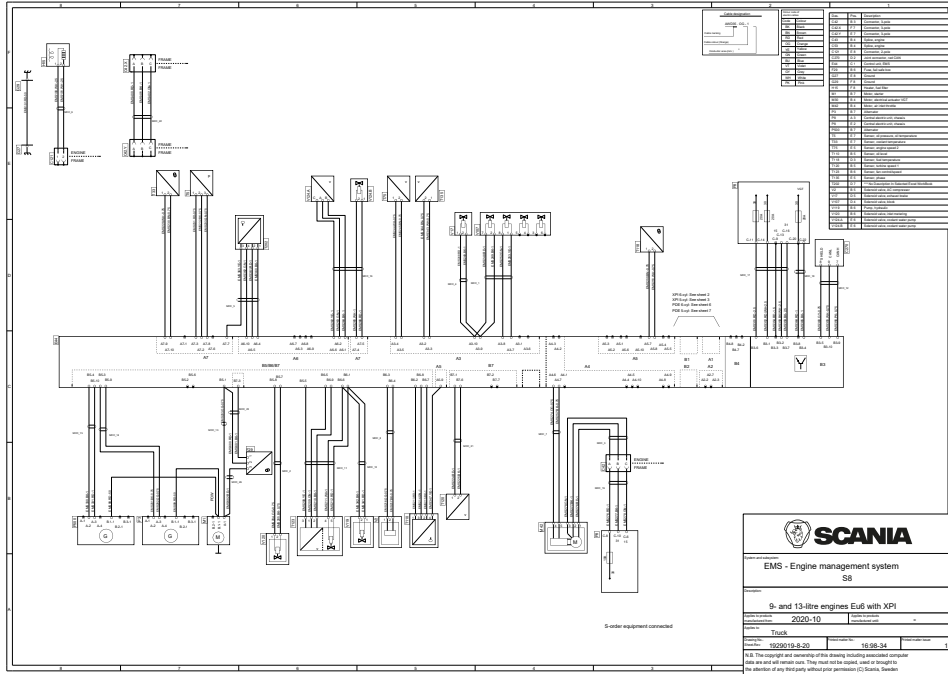


**SCANIA**

EMS - Engine management system  
 EMD1  
 9- and 13-liter Engine with XPI or PDE  
 Engine without EGR, electric throttle option  
 2015-08  
 N/A  
 Track Bus  
 16-03-17 16-03-08 1

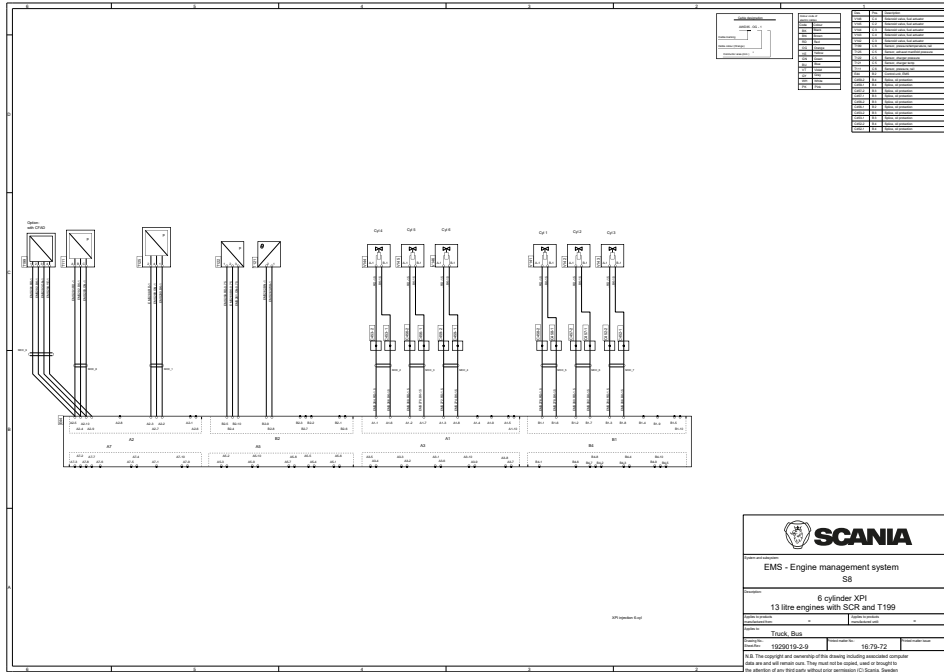
1. All the electrical and mechanical parts shown in this document are standard equipment.  
 2. All the electrical and mechanical parts shown in this document are standard equipment.  
 3. All the electrical and mechanical parts shown in this document are standard equipment.  
 4. All the electrical and mechanical parts shown in this document are standard equipment.

# Visão geral - Motores de 9 e 13 litros, [XPI]

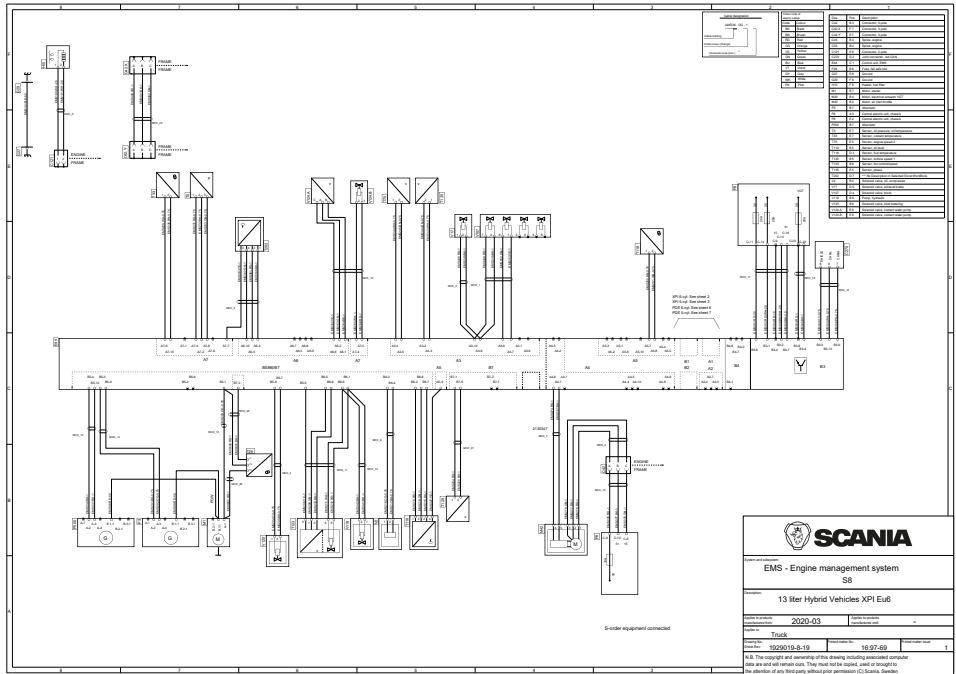


# Visão geral - Motores de 13 litros com XPI

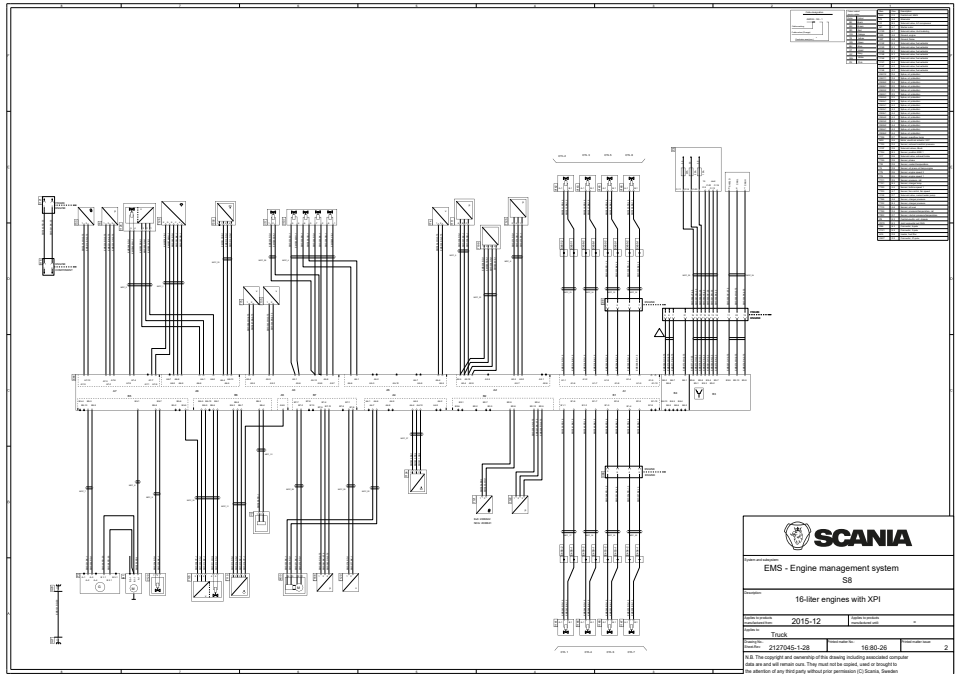
## Cablagem do cilindro com T199



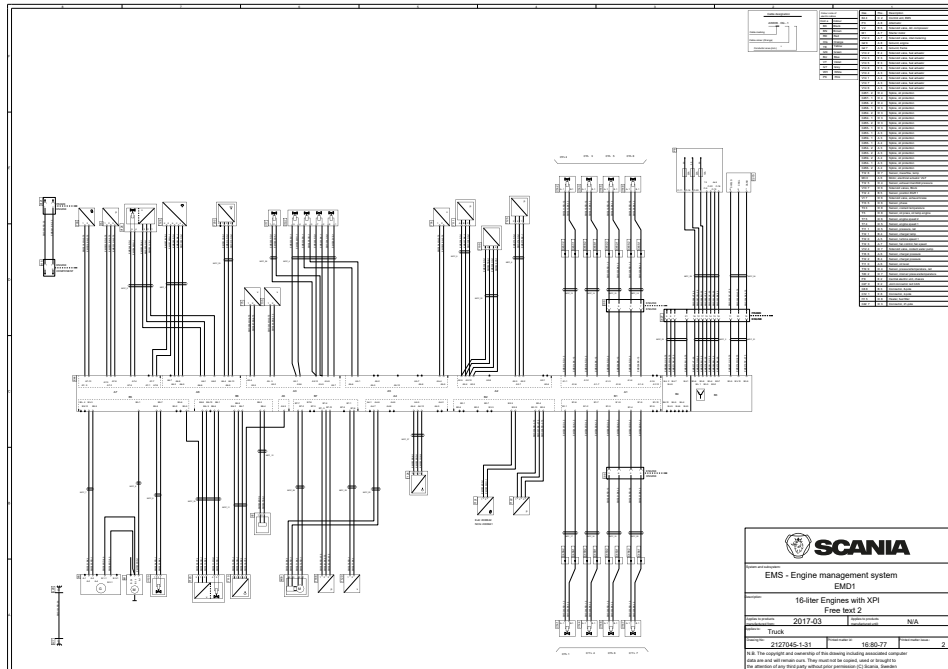
# Visão geral - Motores de 13 litros com XPI, híbridos



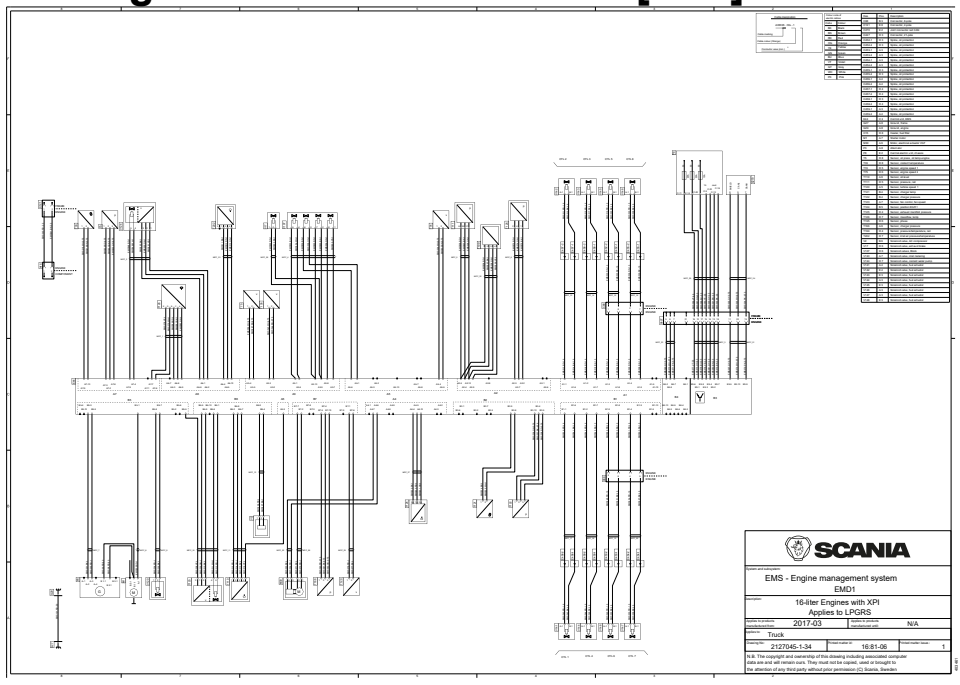
# Visão geral - Motor de 16 litros com XPI



## Visão geral - Motor de 16 litros com XPI



# Visão geral - Motor de 16 litros [ XPI ]



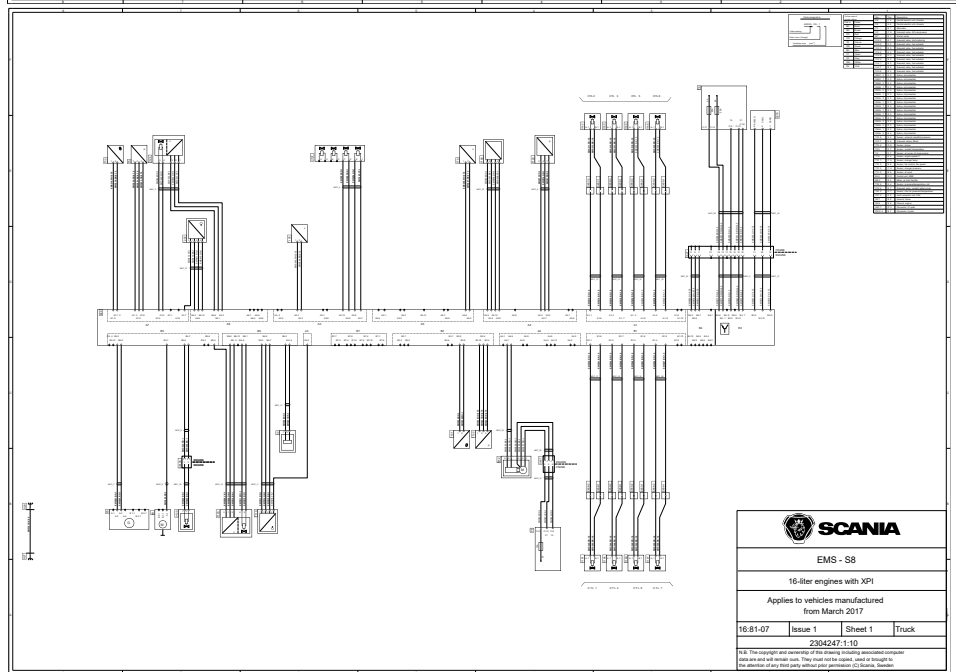
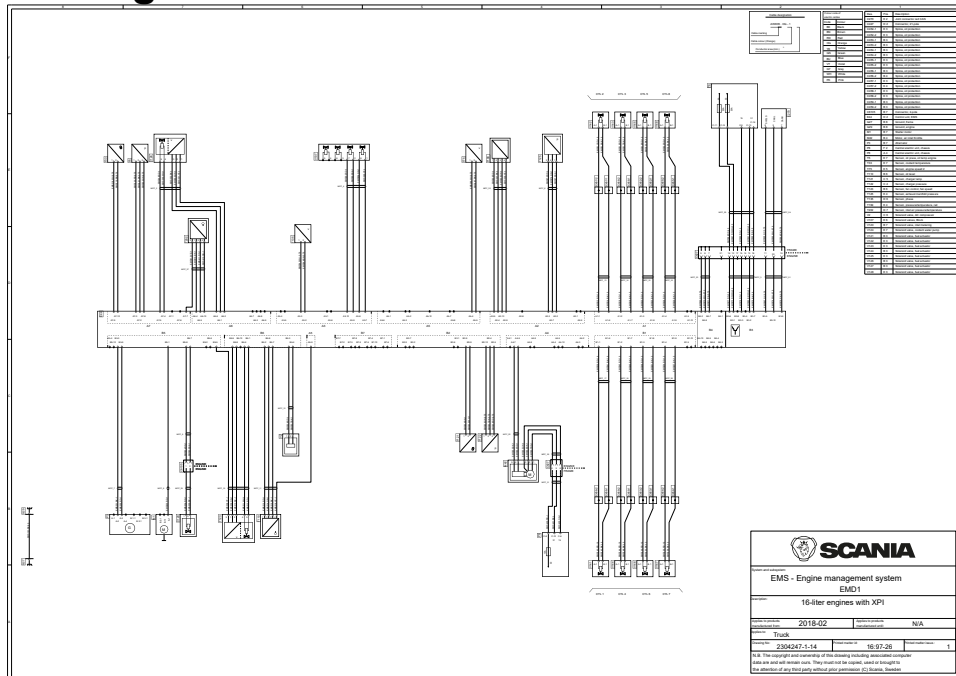
**SCANIA**

EMS - Engine management system  
EMDI  
16-liter Engine with XPI  
Applies to LPGRS

Track	N/A
2122845-134	16E1-05

© 2017 Scania. All rights reserved. The copyright and ownership of this drawing including associated computer data remain with Scania. This drawing is supplied under the terms of the applicable Scania policy, which may vary by region.

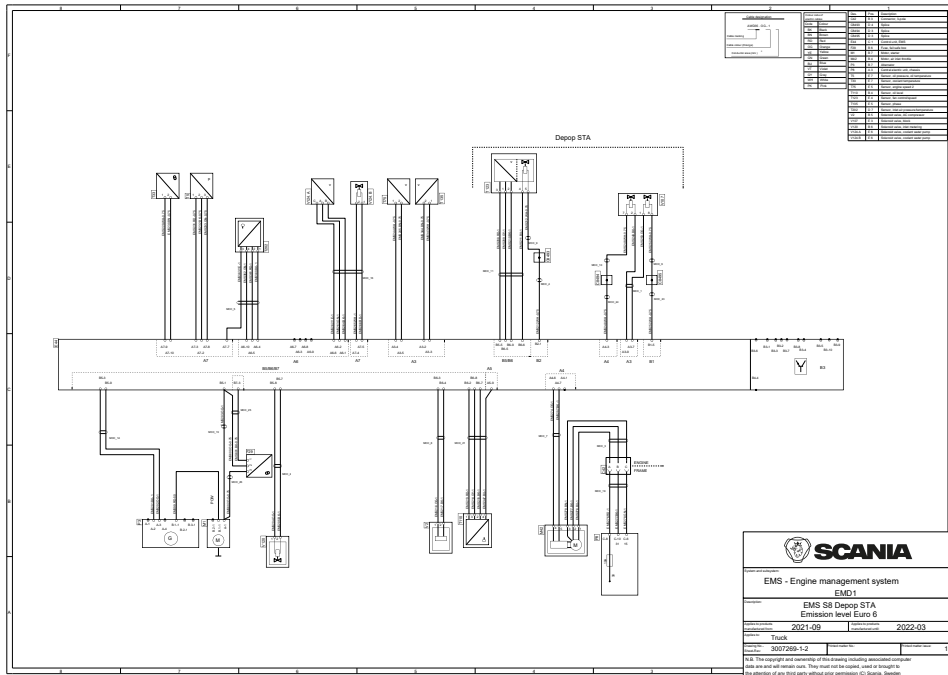
# Visão geral - Motor de 16 litros com XPI





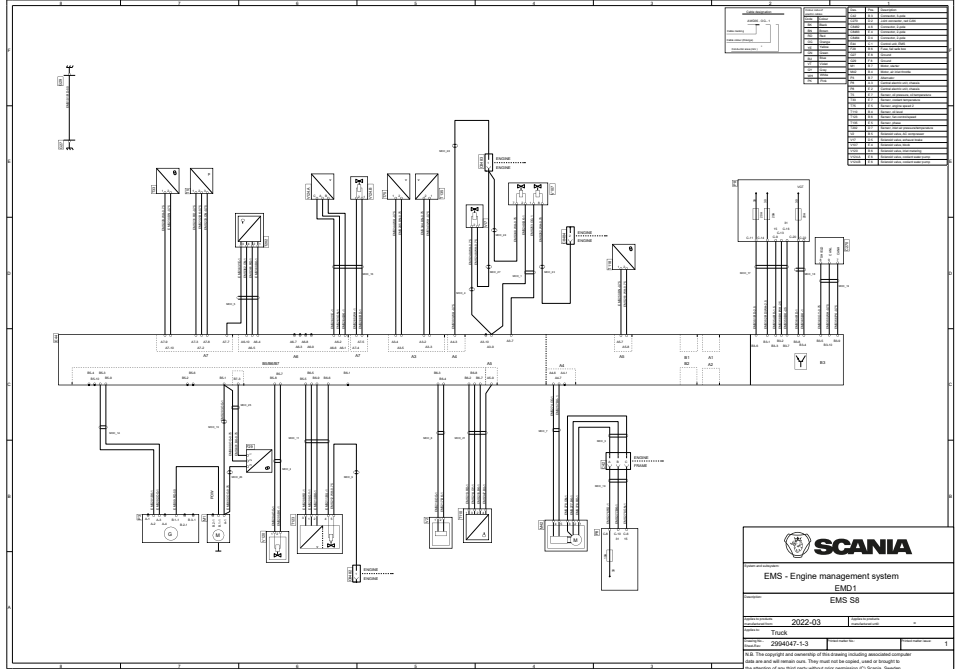
# Visão geral - Motores de 9 e 13 litros, [XPI]

Aplicável a veículos fabricados a partir de setembro de 2021 até e inclusive março de 2022



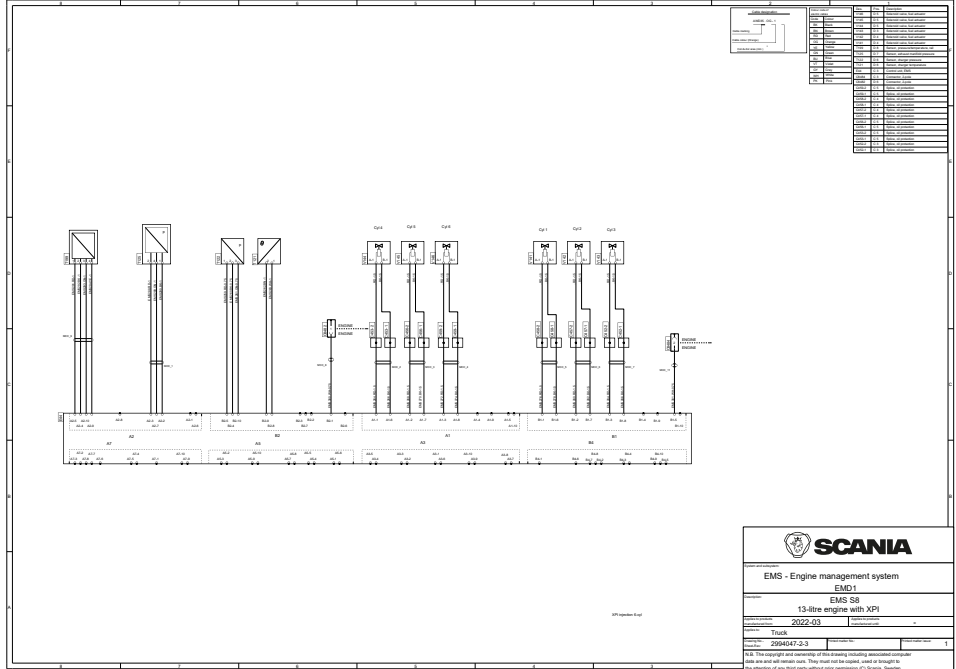
# Visão geral - Motores de 9 e 13 litros

Aplicável a veículos fabricados a partir de março de 2022



# Visão geral - Motores de 13 litros, XPI

Aplicável a veículos fabricados a partir de março de 2022



**SCANIA**

EMS - Engine management system  
EMD1

EMS S8  
13-litre engine with XPI

2022-03

2022-03-3

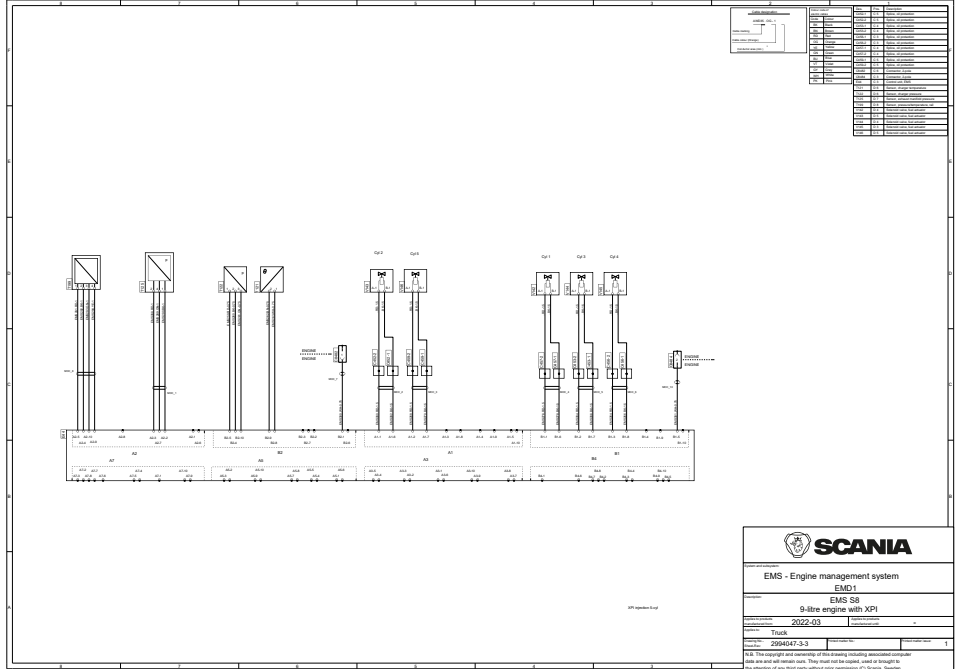
2022-03-3

1

EMD1

# Visão geral - Motores de 9 litros [XPI]

Aplicável a veículos fabricados a partir de março de 2022



# Visão geral - Motores 13 litros [PDE]

Aplicável a veículos fabricados a partir de março de 2022

