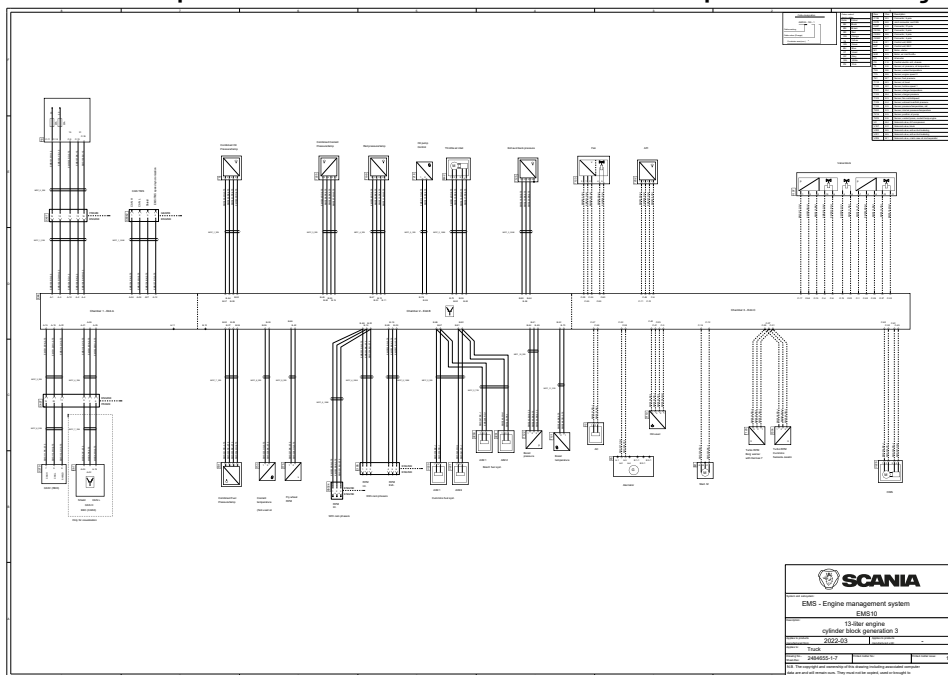


EMS, Sistema de controle do motor EMS10, para caminhões

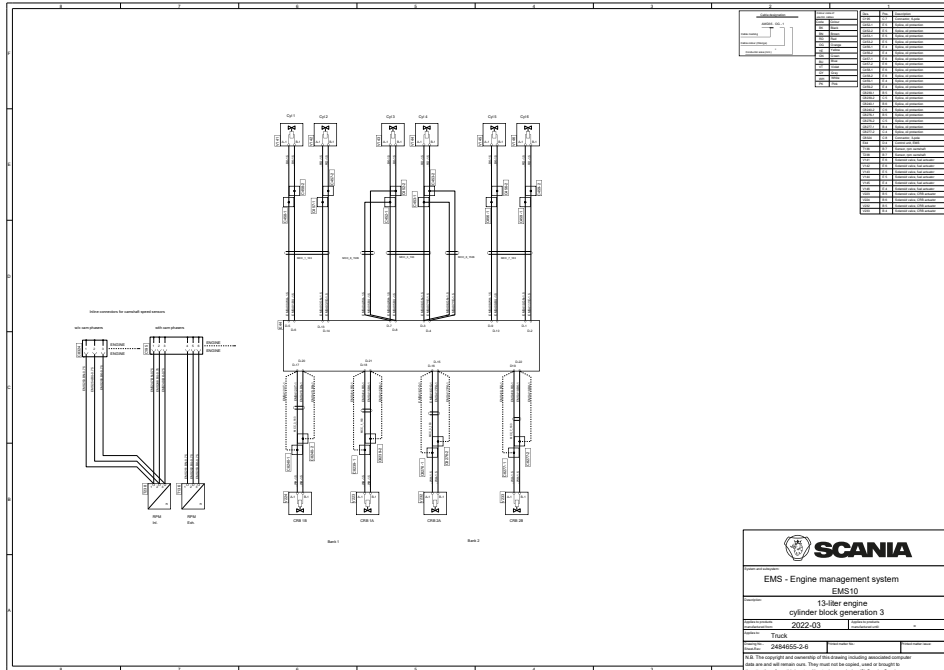
Visão geral - Motores de 13 litros

Folha 1: Aplicável a veículos fabricados a partir de março de 2022



Visão geral - Motores de 13 litros

Folha 2: Aplicável a veículos fabricados a partir de março de 2022



Component	Part Number	Quantity	Notes
ECU	2458655-3-S	1	
CKP Sensor	2458655-3-S	1	
CMP Sensor	2458655-3-S	1	
Temperature Sensors	2458655-3-S	1	
Fuel Injectors	2458655-3-S	1	
Throttle Actuator	2458655-3-S	1	
Glow Plug Heaters	2458655-3-S	1	

SCANIA

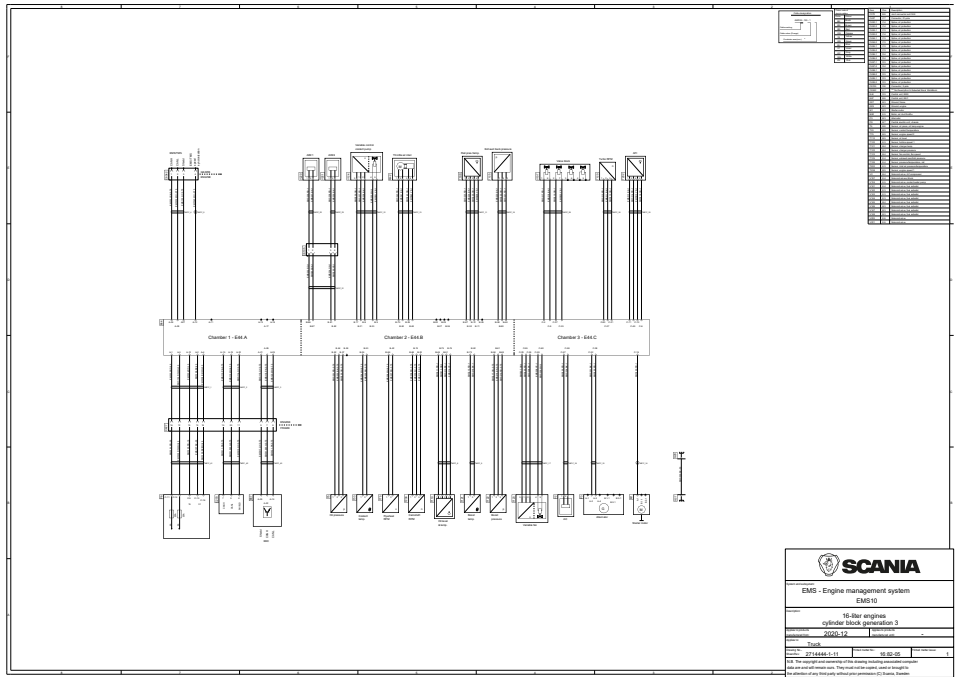
EMS - Engine management system
 EMS10
 13-liter engine
 cylinder block generation 3
 2022-03

Part Number: 2458655-3-S

© 2022 Scania. All rights reserved. This document is the property of Scania. No part of this document may be reproduced, stored in a retrieval system, or transmitted in any form or by any means, electronic, mechanical, photocopying, recording, or by any information storage and retrieval system, without prior permission in writing from Scania. Sweden.

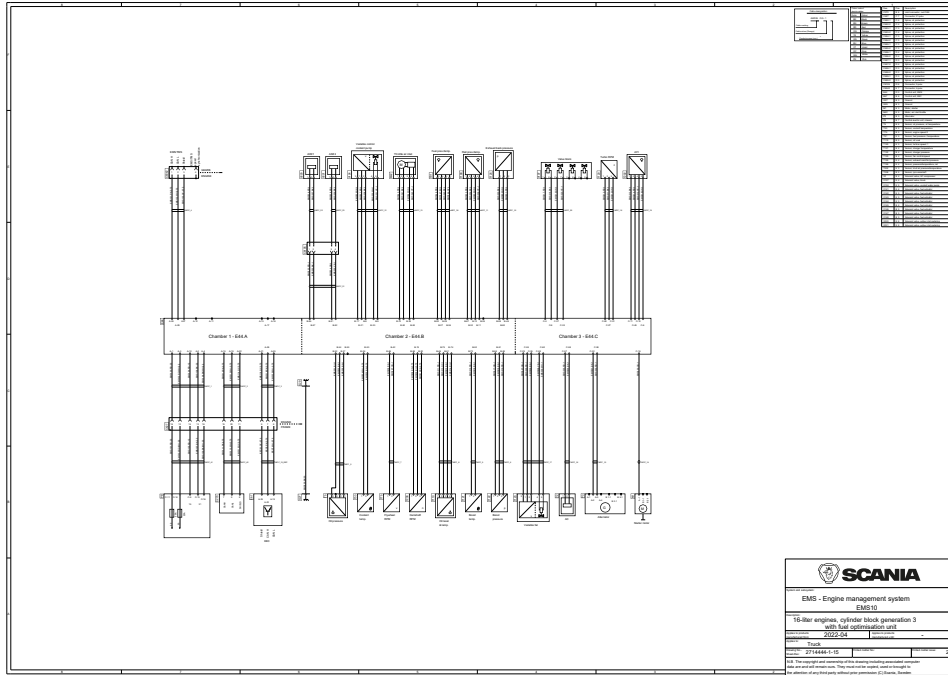
Visão geral - Motor de 16 litros

Folha 1: Aplicável a motores de 16 litros, geração 3 de bloco de cilindros sem tanque de otimização do combustível.



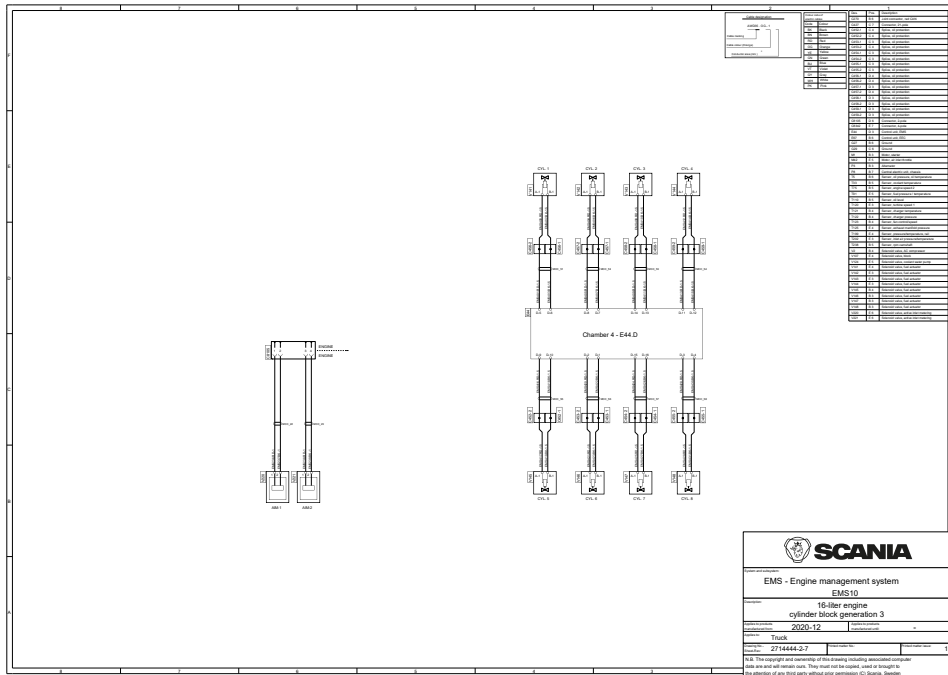
Visão geral - Motor de 16 litros

Folha 1: Aplicável a motores de 16 litros, geração 3 de bloco de cilindros com tanque de otimização do combustível.



Visão geral - Motor de 16 litros

Folha 2: Aplicável a motores de 16 litros, geração 3 de bloco de cilindros



SCANIA

EMS - Engine management system
 EMS10
 16-liter engine
 cylinder block generation 3
 2020-12

Truck

Part number: 2144444-2-1

© 2020 Scania AB. All rights reserved. Scania AB is not responsible for any errors or omissions in this document. Scania AB is not liable for any damage or injury caused by the use of this document.